



## 1823 El Camino Real

Redwood City, California

1823  
EL CAMINO REAL



**CHEAPEST**  
**Office Space**  
**AVAILABLE**  
*on the Peninsula!*

### PROPERTY OVERVIEW

Prime space available with high visibility and blocks from downtown

#### 1823-A HIGHLIGHTS

- $\pm 4,000$  SF
- Open Flex Space
- All New Carpet and Paint
- New AC and Lighting Throughout
- New Bathroom Fixtures
- High Visibility Glass Window Line
- 4 Parking Spaces

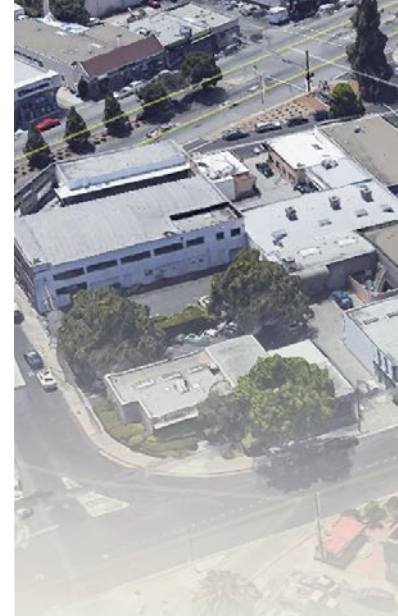
#### LEASE TERMS

- \$1.75 PSF NNN



LEASE OPPORTUNITY → PRIME SPACE W/ HIGH VISIBILITY BLOCKS FROM DOWNTOWN

## 1823 El Camino Real, Redwood City



### CONTACT US

**Anthony Kamm**

ak@seq-rs.com

650.888.3858

CAL DRE LIC NO. 01783456

**Ryan Pegnim**

rcp@seq-rs.com

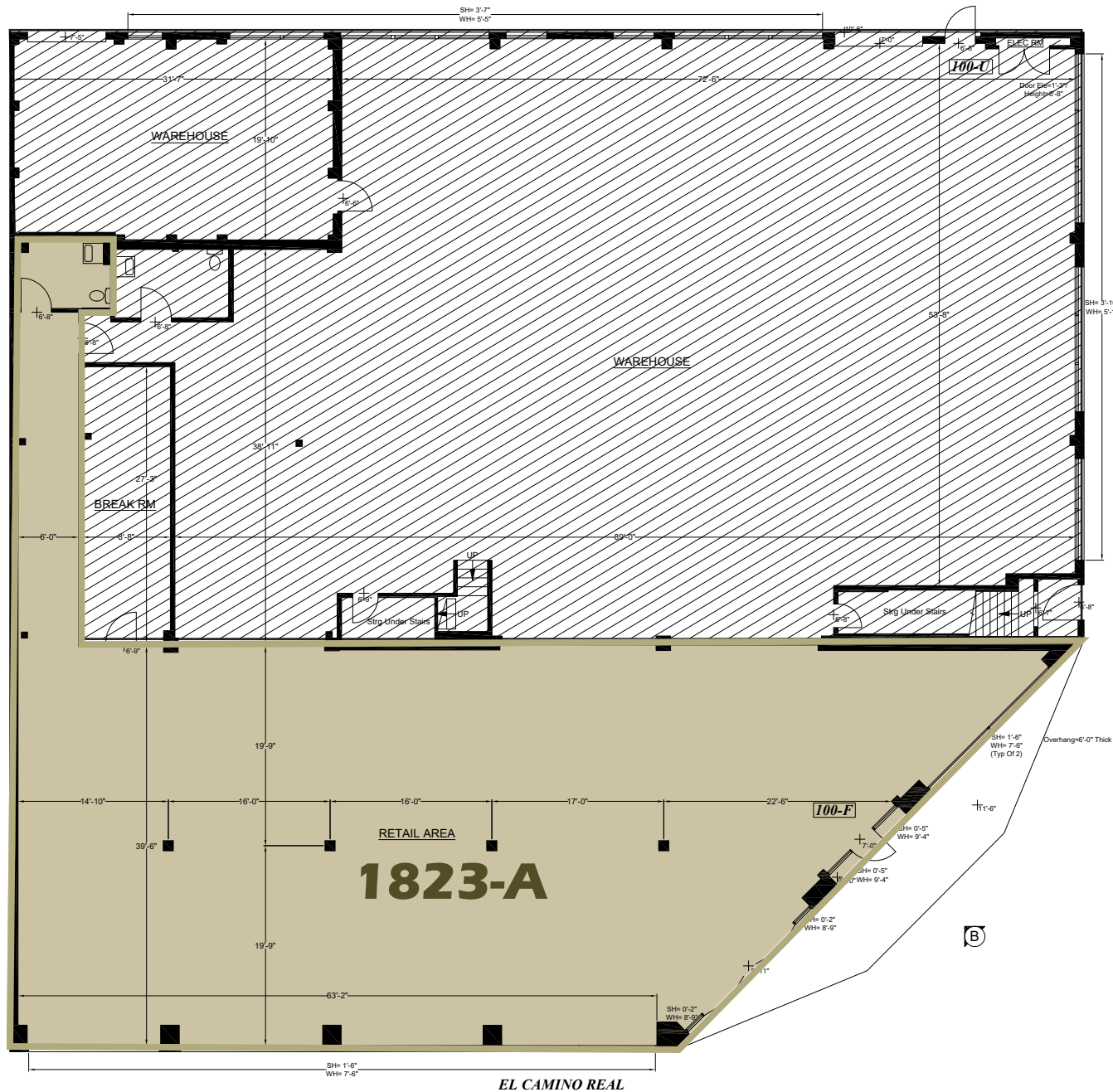
650.346.9820

CAL DRE LIC NO. 01478696



LEASE OPPORTUNITY → PRIME SPACE W/ HIGH VISIBILITY BLOCKS FROM DOWNTOWN

## 1823 El Camino Real, Redwood City



### CONTACT US

**Anthony Kamm**

ak@seq-rs.com

650.888.3858

CAL DRE LIC NO. 01783456

**Ryan Pegnim**

rcp@seq-rs.com

650.346.9820

CAL DRE LIC NO. 01478696





# 1823 El Camino Real, Redwood City

**REDWOOD CITY** is a city in San Mateo County, California on the San Francisco Peninsula, about halfway between San Francisco and San Jose. Redwood City is probably best known for its downtown. It also has great historic buildings mixed with a variety of restaurants, public open space and transportation options.

**24 MI**  
SOUTH OF  
SAN FRANCISCO

**35 MI**  
SOUTHWEST OF  
OAKLAND

**24 MI**  
NORTH OF  
SAN JOSE

CalTrain Sequoia Station	Time
From Palo Alto to RWC	7 min
RWC to San Francisco	31 min
RWC to San Jose	27 min

Airports	Drive	Distance
San Francisco (SFO)	20 min	14 mi
San Jose (SJC)	30 min	22 mi
Oakland (OAK)	20 min	17 mi

