



850 San Antonio Road

Palo Alto, California



PROPERTY OVERVIEW

RARE HIGH IDENTITY PALO ALTO R&D BUILDING

HIGHLIGHTS

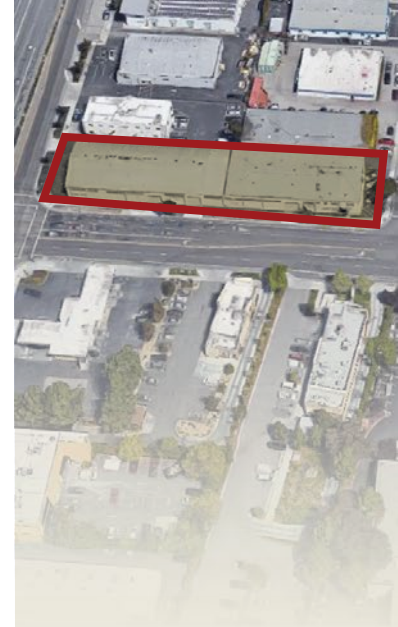
- ±20,880 SF Building
- Excellent Signage and Visibility on Corner of San Antonio and E. Charleston
- R&D / Flex / Warehouse
- 2 Rollups
- High Ceiling Bow Truss Warehouse
- Large Offices/ Conference Rooms
- Kitchen
- Shower Facility
- Showroom / Sales Office
- Easy Access to Hwy 101
- On-site Parking Spaces PLUS Additional Fenced and Gated Parking Lot for a Total of Approx. 50 Parking Spaces

LEASE TERMS

- Asking: \$1.85 PSF IG

RARE HIGH IDENTITY PALO ALTO R&D BUILDING FOR LEASE

850 San Antonio Road, Palo Alto



CONTACT US

Anthony Kamm
ak@seq-rs.com
650.888.3858
CAL DRE LIC NO. 01783456

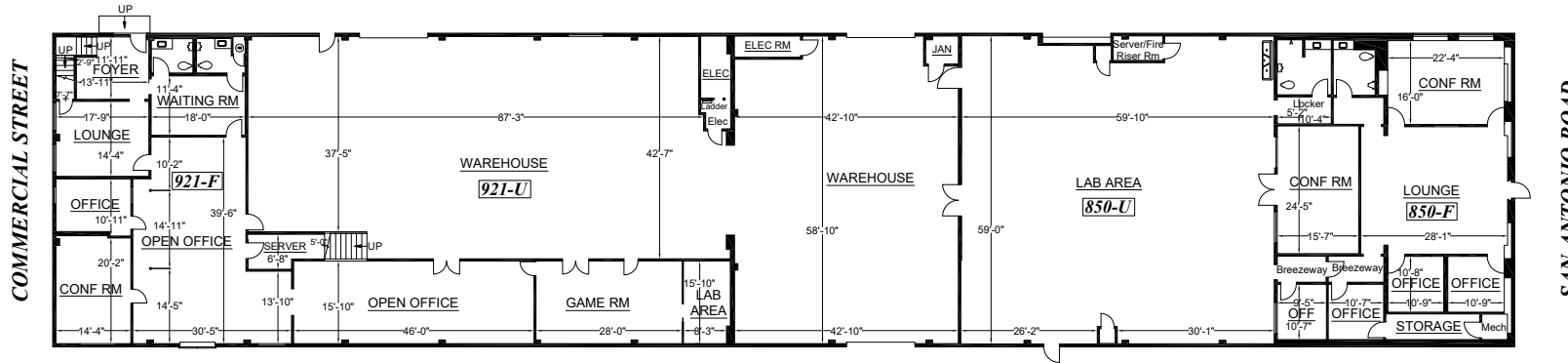
Ryan Pegnim
rcp@seq-rs.com
650.346.9820
CAL DRE LIC NO. 01478696



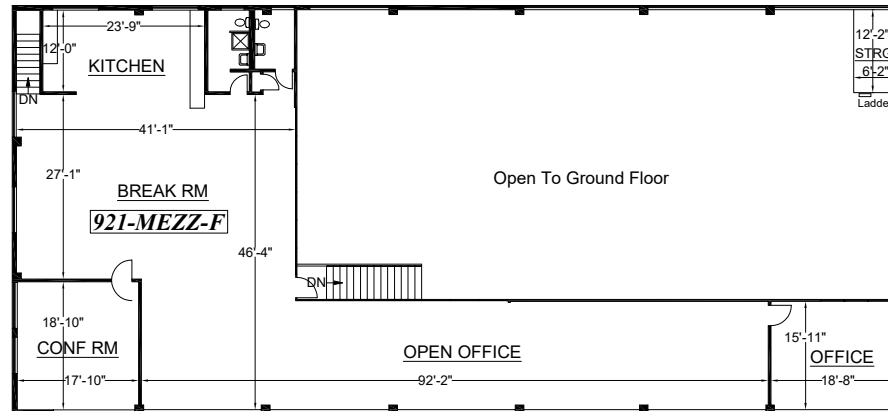
RARE HIGH IDENTITY PALO ALTO R&D BUILDING FOR LEASE

850 San Antonio Road, Palo Alto

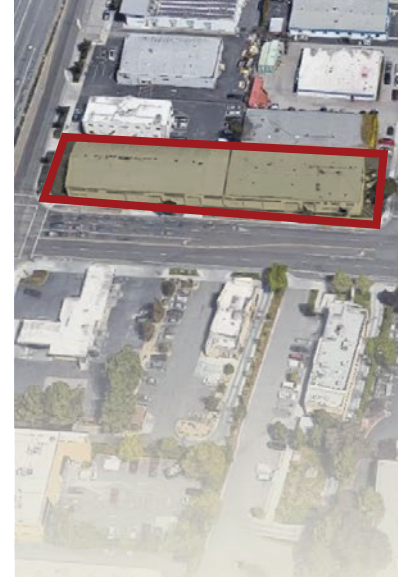
E. CHARLESTON ROAD



Ground Floor



Mezzanine



CONTACT US

Anthony Kamm

ak@seq-rs.com

650.888.3858

CAL DRE LIC NO. 01783456

Ryan Pegnim

rcp@seq-rs.com

650.346.9820

CAL DRE LIC NO. 01478696

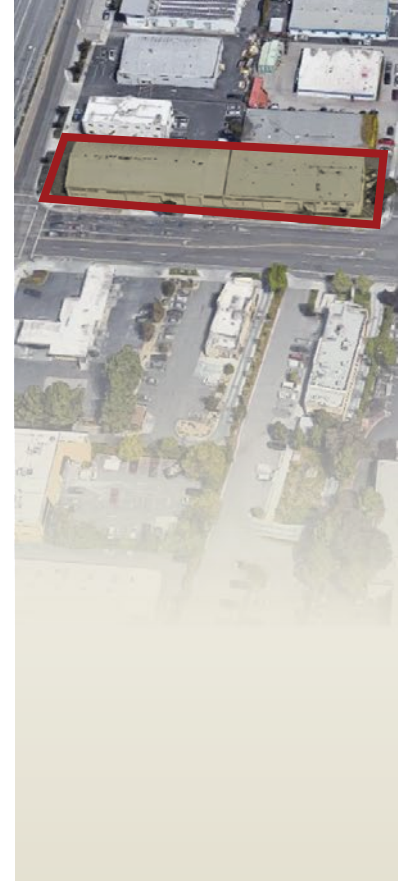


RARE HIGH IDENTITY PALO ALTO R&D BUILDING FOR LEASE

850 San Antonio Road, Palo Alto

LOCATION OVERVIEW

850 San Antonio Road is conveniently located on the San Francisco Peninsula off of Highway 101. The Facility is 25 minutes south of San Francisco International Airport and Roughly 15 minutes north of San Jose International Airport. The property is located off the San Antonio Road exit of Highway 101. The facility provides Easy Access to Hwy 101, 280, El Camino Real and CalTrain.



CONTACT US

Anthony Kamm

ak@seq-rs.com

650.888.3858

CAL DRE LIC NO. 01783456

Ryan Pegnim

rcp@seq-rs.com

650.346.9820

CAL DRE LIC NO. 01478696

