



1629 Main Street

Redwood City, California

PROPERTY OVERVIEW

**PLUG & PLAY OFFICE AVAILABLE
IN CLASS A MIDTOWN BUILDING**

HIGHLIGHTS

- \pm 3,172 – 12,283 SF Available
- Partial or Full Floor
- On-Site Secured Parking
- 3 Conference Rooms, 3 Phone Rooms/Offices
- Kitchenette
- Open Office Floor Plan Containing Large Cubicles with Motorized Standing and Hotel Desks; Plug and Play Strongly Preferred
- Built-in Reception Desk with Mounted in Wall TV
- Copy/Storage Room
- Easy Access to Hwy 101, 280, Woodside Road and El Camino Real
- Walking Distance to Downtown Redwood City and CalTrain
- Walking Distance to Starbucks, Harry's Hofbrau, Wing Stop, Doordash Kitchen and more!

LEASE TERMS

- Flexible Term Length
- Rate: \$5.95 PSF IG

LEASE OPPORTUNITY → PLUG & PLAY SECOND FLOOR OFFICE SPACE

1629 Main Street, Redwood City



BUILDING EXTERIOR PHOTOS

LEASE OPPORTUNITY → PLUG & PLAY SECOND FLOOR OFFICE SPACE

1629 Main Street, Redwood City



Reception Area



Open Office (East End)



Open Office (East End)



Phone Room/Office



Open Office (West End)



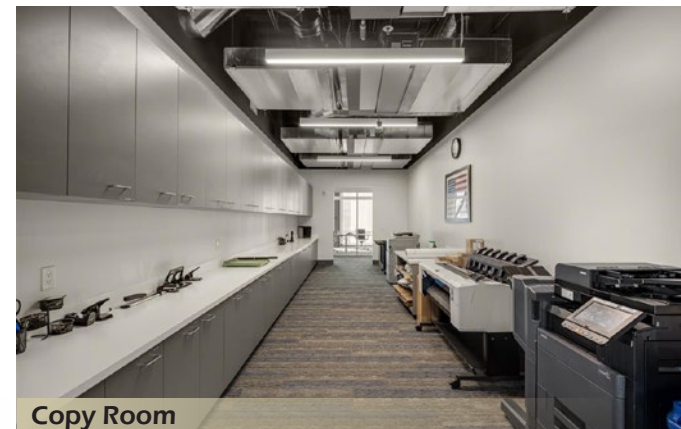
Seating Area (West End)



Large Conference Room



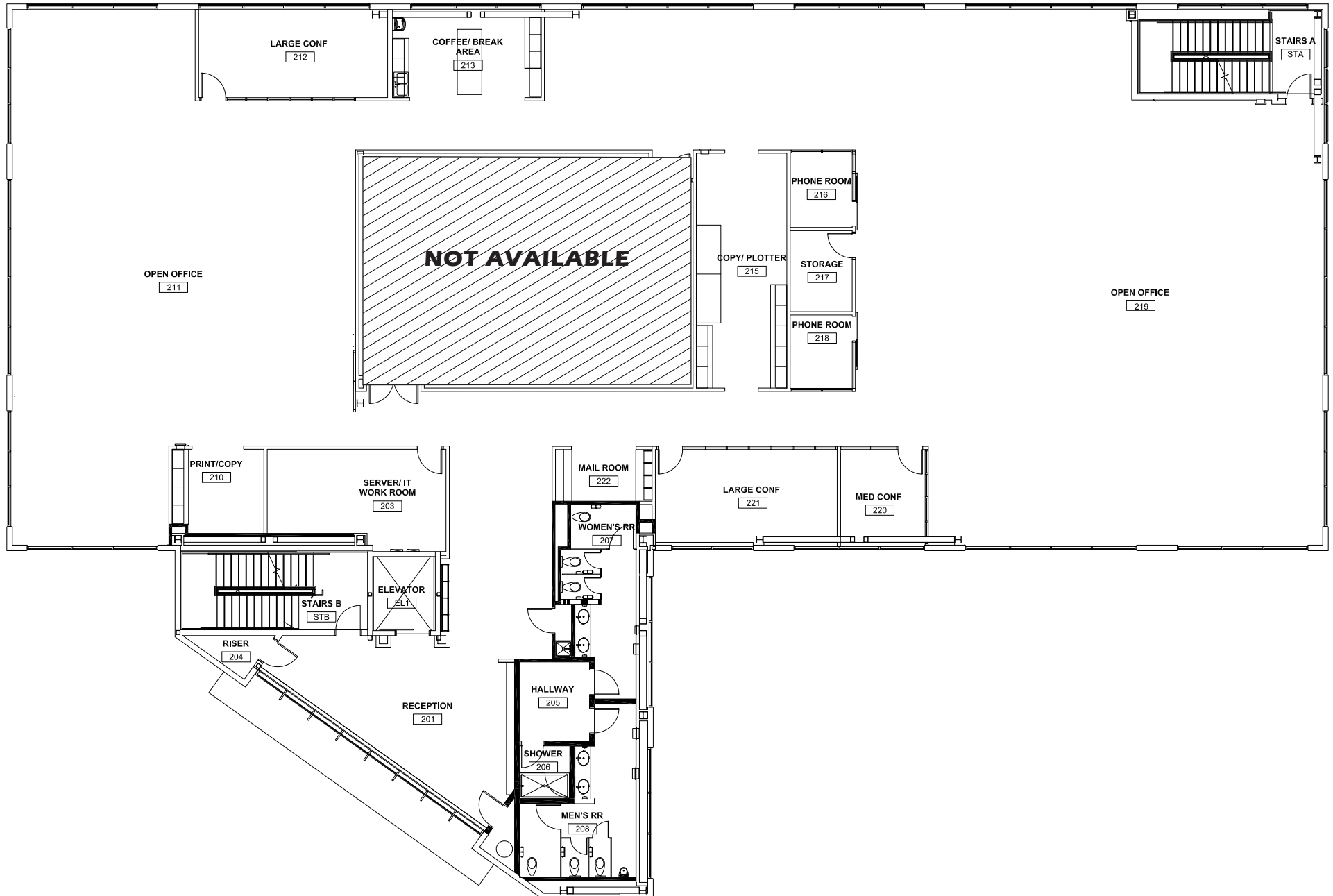
Coffee/Break Area



Copy Room

INTERIOR PHOTOS





1629 Main Street, Redwood City

REDWOOD CITY is a city in San Mateo County, California on the San Francisco Peninsula, about halfway between San Francisco and San Jose. Redwood City is probably best known for its downtown. It also has great historic buildings mixed with a variety of restaurants, public open space and transportation options.

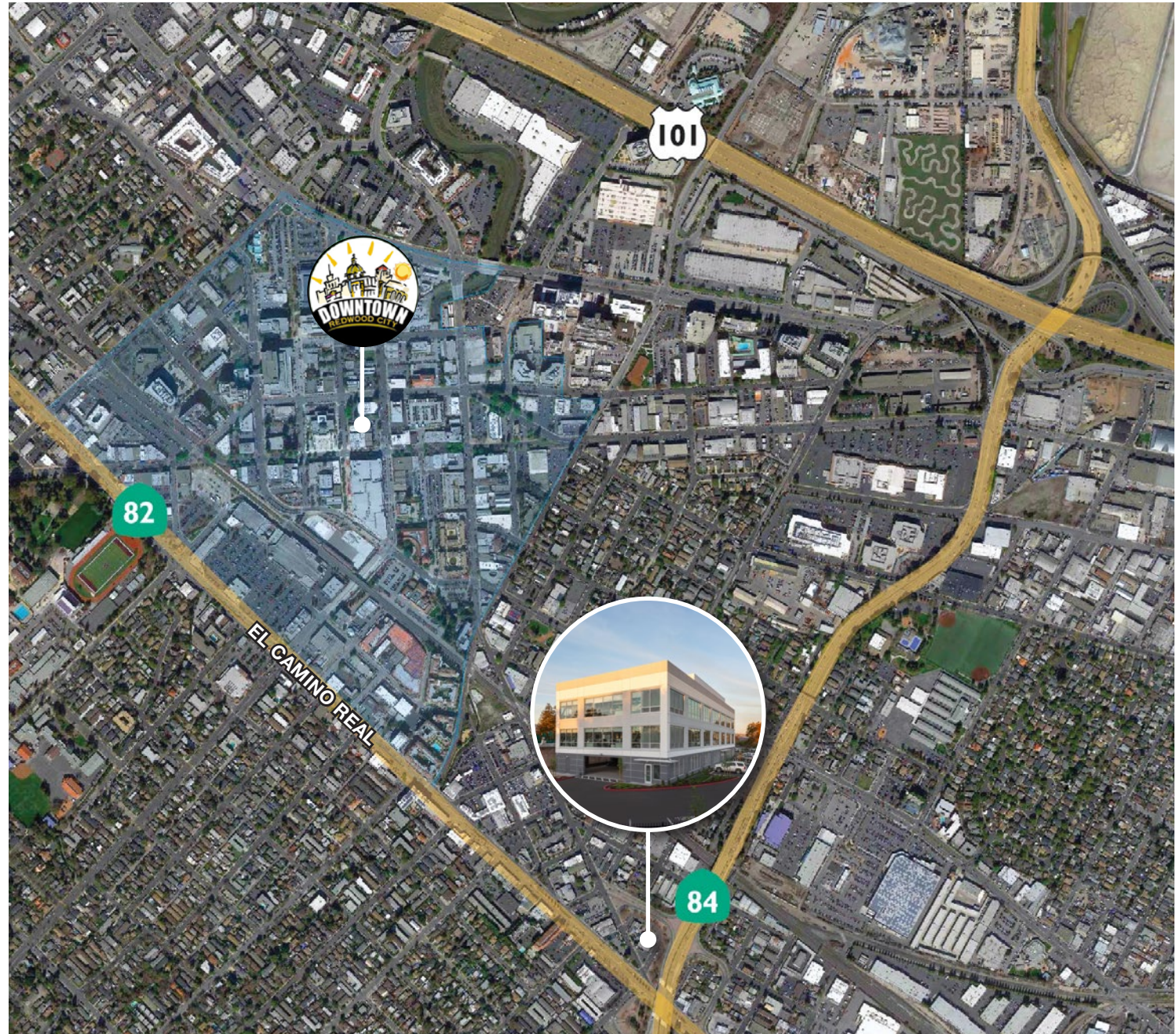
24 MI
SOUTH OF
SAN FRANCISCO

35 MI
SOUTHWEST OF
OAKLAND

24 MI
NORTH OF
SAN JOSE

CalTrain Sequoia Station	Time
From Palo Alto to RWC	7 min
RWC to San Francisco	31 min
RWC to San Jose	27 min

Airports	Drive	Distance
San Francisco (SFO)	20 min	14 mi
San Jose (SJC)	30 min	22 mi
Oakland (OAK)	20 min	17 mi





WWW.SRSCRE.COM

OUR COMMERCIAL TEAM

Anthony Kamm

akamm@seq-rs.com

650.556.8668

CAL DRE LIC NO. 01783456

Ryan Pegnim

rpegnim@seq-rs.com

650.556.8672

CAL DRE LIC NO. 01478696

Frank Orrell

fo@seq-rs.com

650.302.4775

CAL DRE LIC NO. 01872831

