

AVAILABLE FOR LEASE

3200-3408 HILLCAP AVENUE, San Jose



+/- 26,250 SF Building on 5.87 Acres | Industrial Outdoor Storage Site

CONTACT INFORMATION



Frank Orrell
Partner
Sequoia Realty Services
DRE# 01872831
E: fo@seq-rs.com
C: (650) 302-4775



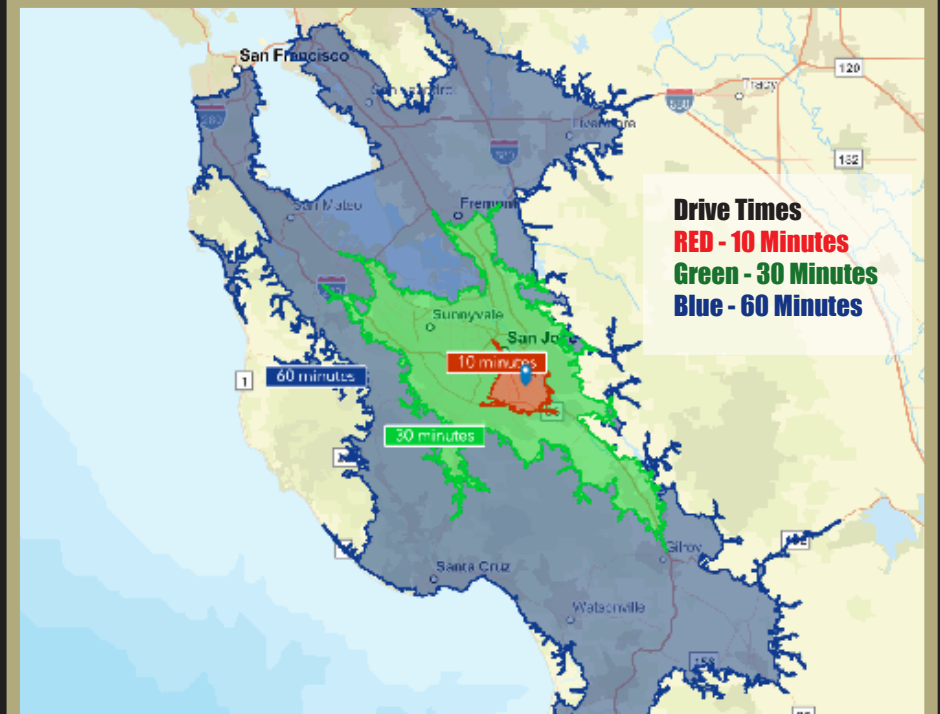
Anthony Kamm
Principal
DRE #01783456
Sequoia Realty Services
E: ak@seq-rs.com
C: (650) 888-3858

All information furnished regarding property for sale, rental or financing is from sources deemed reliable, but no warranty or representation is made to the accuracy thereof and same is submitted to errors, omissions, change of price, rental or other conditions prior to sale, lease or financing or withdrawal without notice. No liability of any kind is to be imposed on the broker herein.





BUILDING AERIAL



Site Details

+/- 5.87 Acres
 10.2% FAR
 Land to Building Ratio: 9.74:1
 Heavy Industrial (MH)



Building Details

26,250 SF Building
 Year Built: 1968
 Warehouse: 13,750 SF
 Office: 12,500 SF
 Clear Height: 22'
 Grade Level Doors: 4



Location Details

CA-87: 2.2 miles
 E Capitol Expy: 2.6 miles
 HWY 101: 3 miles
 Santa Cruz: 32 miles
 Downtown San Jose: 6 miles
 Oakland: 40 miles
 San Francisco: 60 miles



SITE AERIAL

ZONING INFORMATION

Jursidiction: Santa Clara County
Zoning Description: MH - Heavy Industrial

MH Heavy Industrial. The purpose of the Heavy Industrial district, also known as the MH district, is to provide for essential heavy industrial and commercial uses that are likely to impact the surrounding area. This district should be located so as to minimize adverse effects on adjoining areas.



WAREHOUSE INTERIOR

ZONING LINK



**County of
Santa Clara**