



# 4075 Transport Street

Palo Alto, California

## PROPERTY OVERVIEW

**RARE ART STUDIO / R&D /  
WAREHOUSE AVAILABLE  
FOR SALE OR LEASE**

### HIGHLIGHTS

- $\pm 4,950$  SF
- $\pm 6,970$  SF Lot
- 4-5 Parking Spaces
- 1 Rollup
- 2 Bathrooms
- 9 Skylights
- Small Office
- Warehouse Industrial Sink
- 3 Phase 400 Amps 208Y/120
- Clear Span Warehouse
- Custom Walls & Lighting for Art Display
- Easy Access to Hwy 101 and El Camino Real
- Public Transportation Nearby

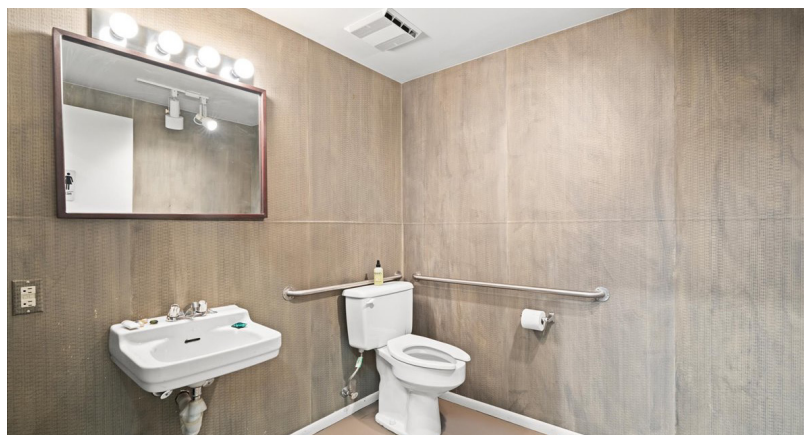
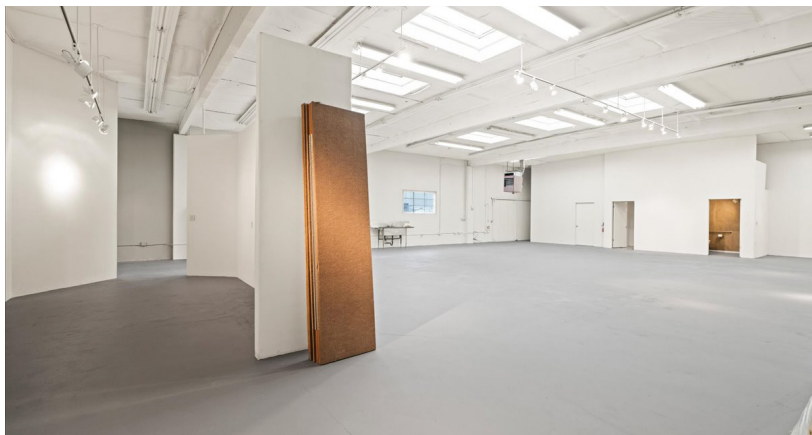
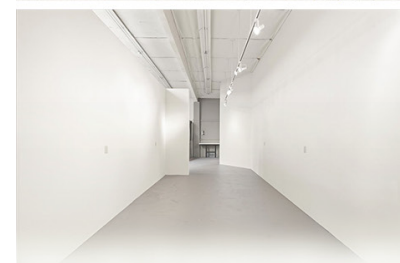
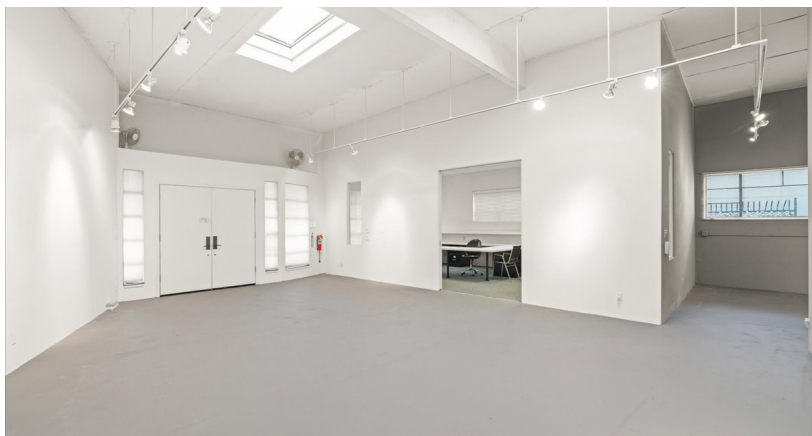
### ASKING

- \$2,750,000 (FOR SALE)
- \$2.40 PSF NNN (FOR LEASE)



FOR SALE OR LEASE → ±4,950 SF RARE ART STUDIO / R&D / WAREHOUSE

## 4075 Transport Street, Palo Alto



### CONTACT US

**Anthony Kamm**

ak@seq-rs.com

650.888.3858

CAL DRE LIC NO. 01783456

**Ryan Pegnim**

rcp@seq-rs.com

650.346.9820

CAL DRE LIC NO. 01478696

**Frank Orrell**

fo@seq-rs.com

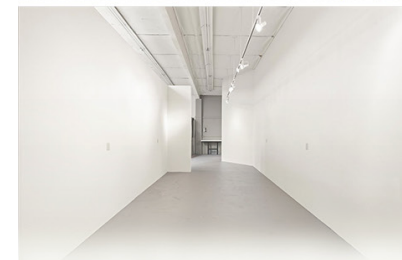
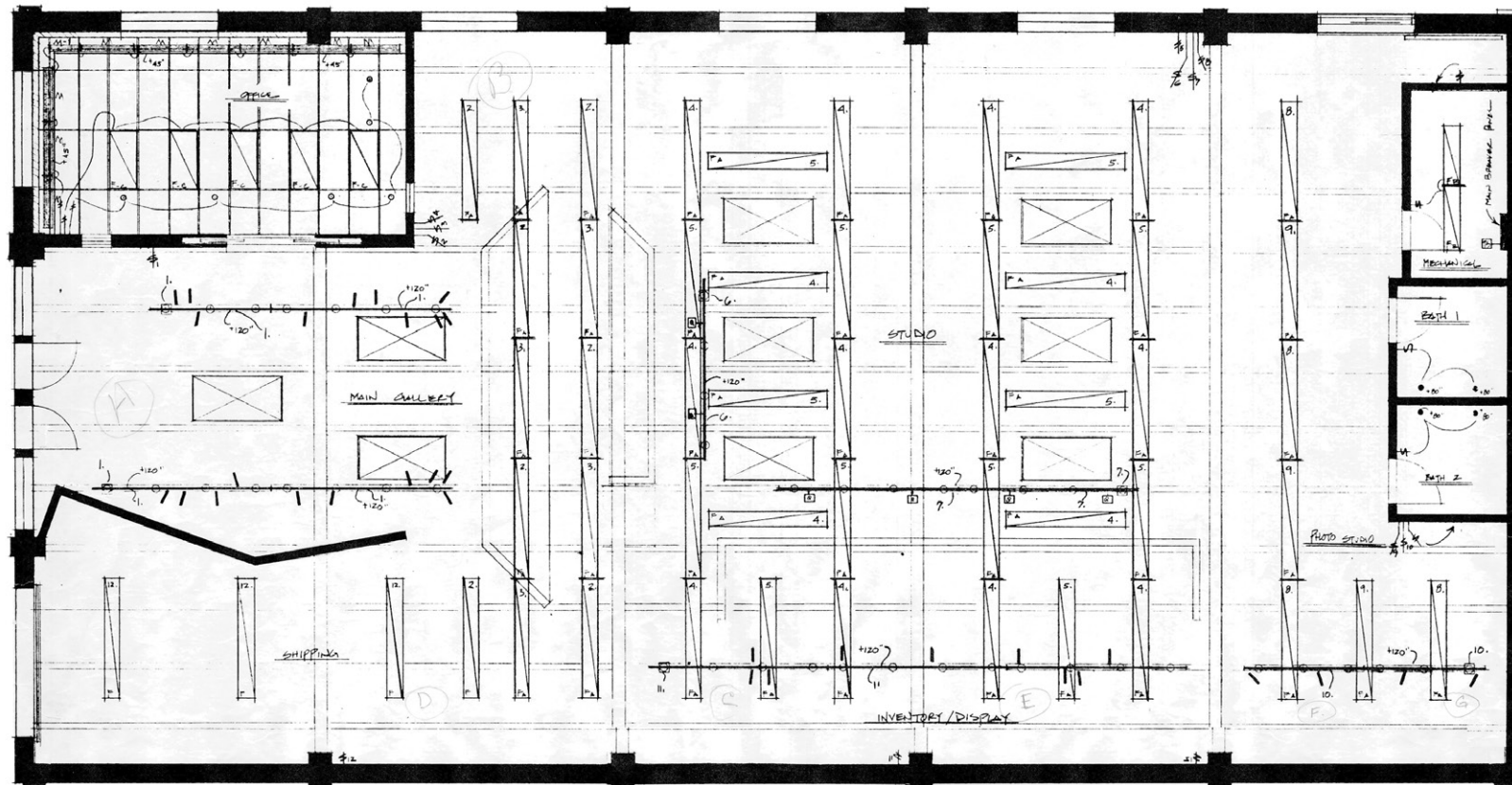
650.302.4775

CAL DRE LIC NO. 01872831



FOR SALE OR LEASE → ±4,950 SF RARE ART STUDIO / R&D / WAREHOUSE

**4075 Transport Street, Palo Alto**



## CONTACT US

**Anthony Kamm**

ak@seq-rs.com

650.888.3858

CAL DRE LIC NO. 01783456

**Ryan Pegnim**

rcp@seq-rs.com

650.346.9820

CAL DRE LIC NO. 01478696

**Frank Orrell**

fo@seq-rs.com

650.302.4775

CAL DRE LIC NO. 01872831



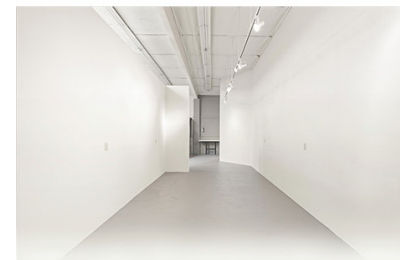
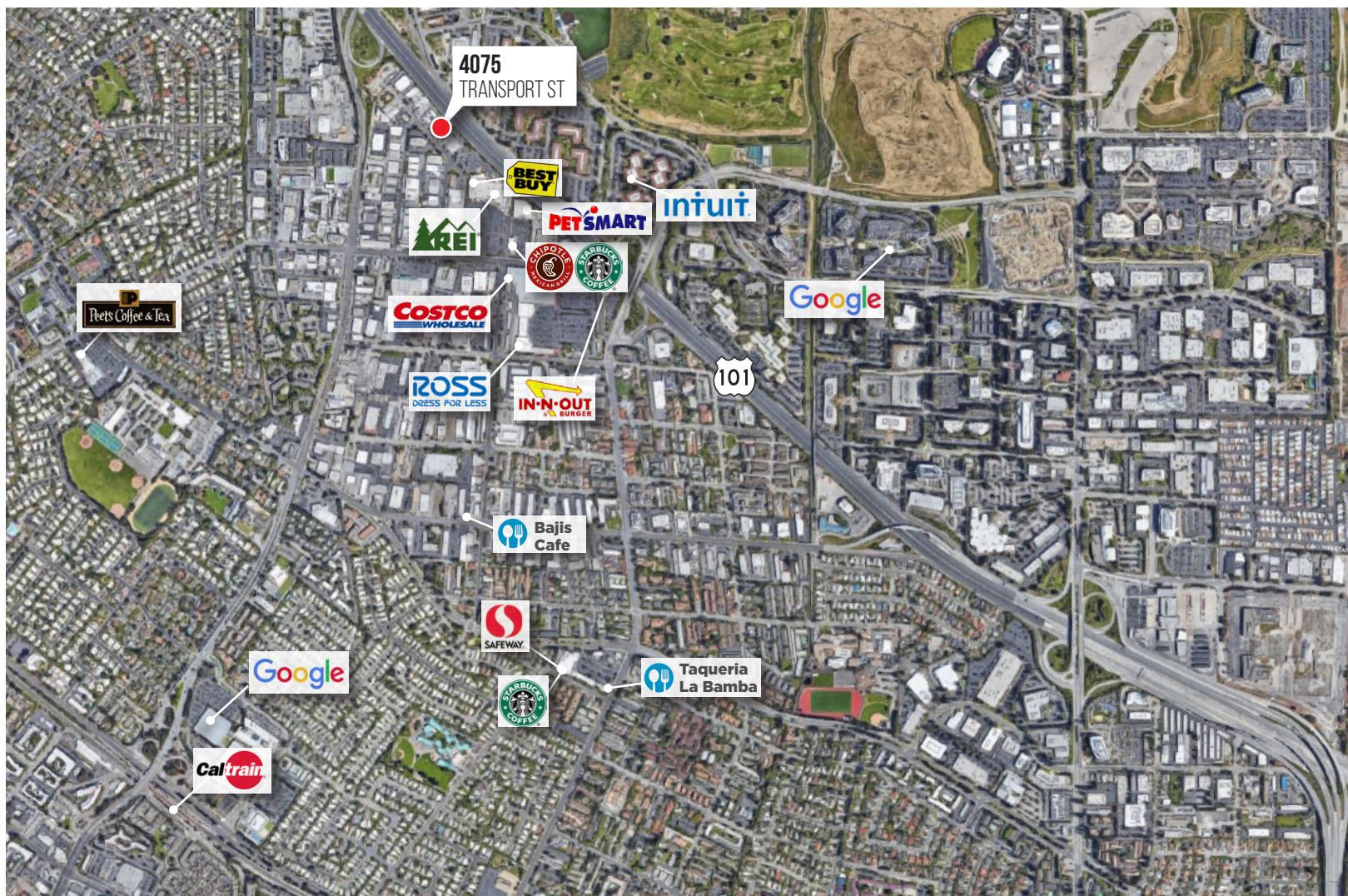


FOR SALE OR LEASE → ±4,950 SF RARE ART STUDIO / R&D / WAREHOUSE

## 4075 Transport Street, Palo Alto

### LOCATION OVERVIEW

**4075 Transport Street** is conveniently located on the San Francisco Peninsula off of Highway 101. The Facility is 25 minutes south of San Francisco International Airport and Roughly 15 minutes north of San Jose International Airport. The property is located off the San Antonio Road exit of Highway 101. The facility provides Easy Access to Hwy 101, 280, El Camino Real and CalTrain.



### CONTACT US

**Anthony Kamm**

ak@seq-rs.com  
650.888.3858  
CAL DRE LIC NO. 01783456

**Ryan Pegnim**

rcp@seq-rs.com  
650.346.9820  
CAL DRE LIC NO. 01478696

**Frank Orrell**

fo@seq-rs.com  
650.302.4775  
CAL DRE LIC NO. 01872831

