



150 Constitution Drive

Menlo Park, California



PROPERTY OVERVIEW

±27,868 SF WAREHOUSE BUILDING FOR LEASE

ZONED R-MU

(Residential
Mixed-Use)



HIGHLIGHTS

- ±18,963 Ground Level (Warehouse / Office)
- ±8,723 Second Story (Office)
- ±1.18 Acres (±51,401 SF Lot)
- Full HVAC Throughout Warehouse
- Heavy Power – 2 Services
1st: 800 Amps / 3 Phase / 120/208
2nd: 800 Amps / 3 Phase / 480V
Tenant to Confirm Power
- Ample On-site Parking (40 Surface Spaces | 1.5/1,000 SF)
- Built in 1971

ACCESSIBILITY

- 8-min Drive to Menlo Park CalTrain Station
- Easy Access to Hwy 101 via Marsh Rd
- Close to Major Tech Campuses and Amenities

TRAFFIC EXPOSURE

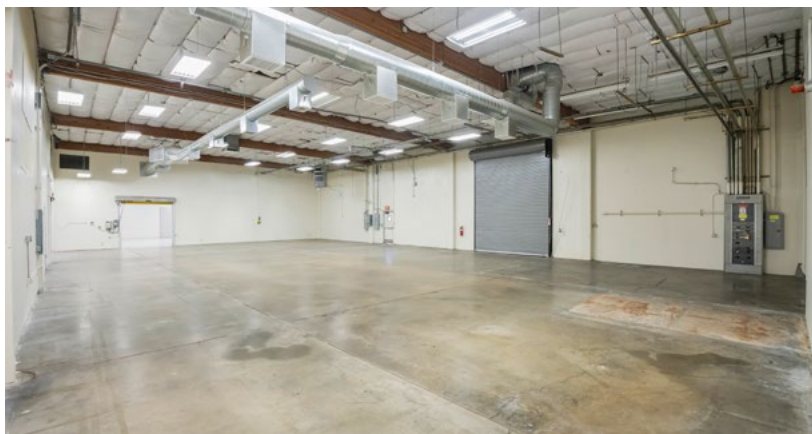
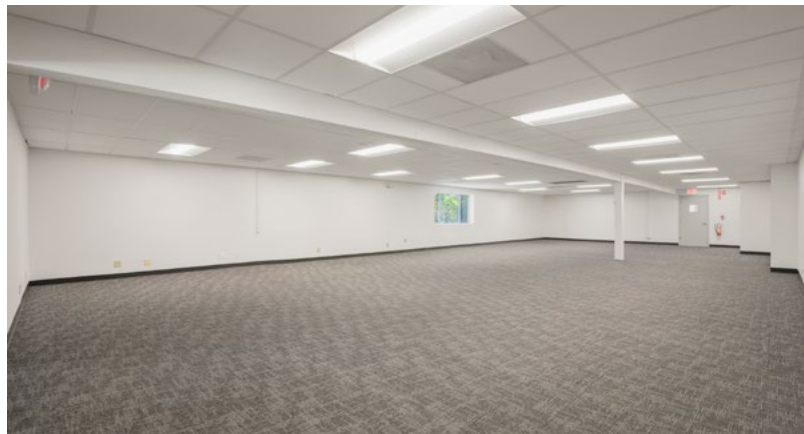
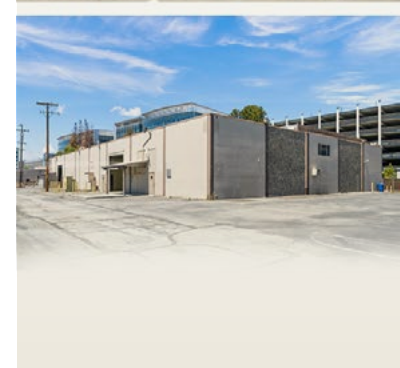
- High Visibility with over 36,000 Vehicles Per Day on Constitution Dr and Marsh Rd

LEASE TERMS

- \$1.85 PSF NNN w/ \$.15 PSF Est. Nets

FOR LEASE → ±27,868 SF HIGH VISIBILITY WAREHOUSE BUILDING

150 Constitution Drive, Menlo Park



CONTACT US

Anthony Kamm

ak@seq-rs.com

650.888.3858

CAL DRE LIC NO. 01783456

Ryan Pegnim

rcp@seq-rs.com

650.346.9820

CAL DRE LIC NO. 01478696

Frank Orrell

fo@seq-rs.com

650.302.4775

CAL DRE LIC NO. 01872831



FOR LEASE → ±27,868 SF HIGH VISIBILITY WAREHOUSE BUILDING

150 Constitution Drive, Menlo Park

FIRST FLOOR



SECOND FLOOR



CONTACT US

Anthony Kamm

ak@seq-rs.com

650.888.3858

CAL DRE LIC NO. 01783456

Ryan Pegnim

rcp@seq-rs.com

650.346.9820

CAL DRE LIC NO. 01478696

Frank Orrell

fo@seq-rs.com

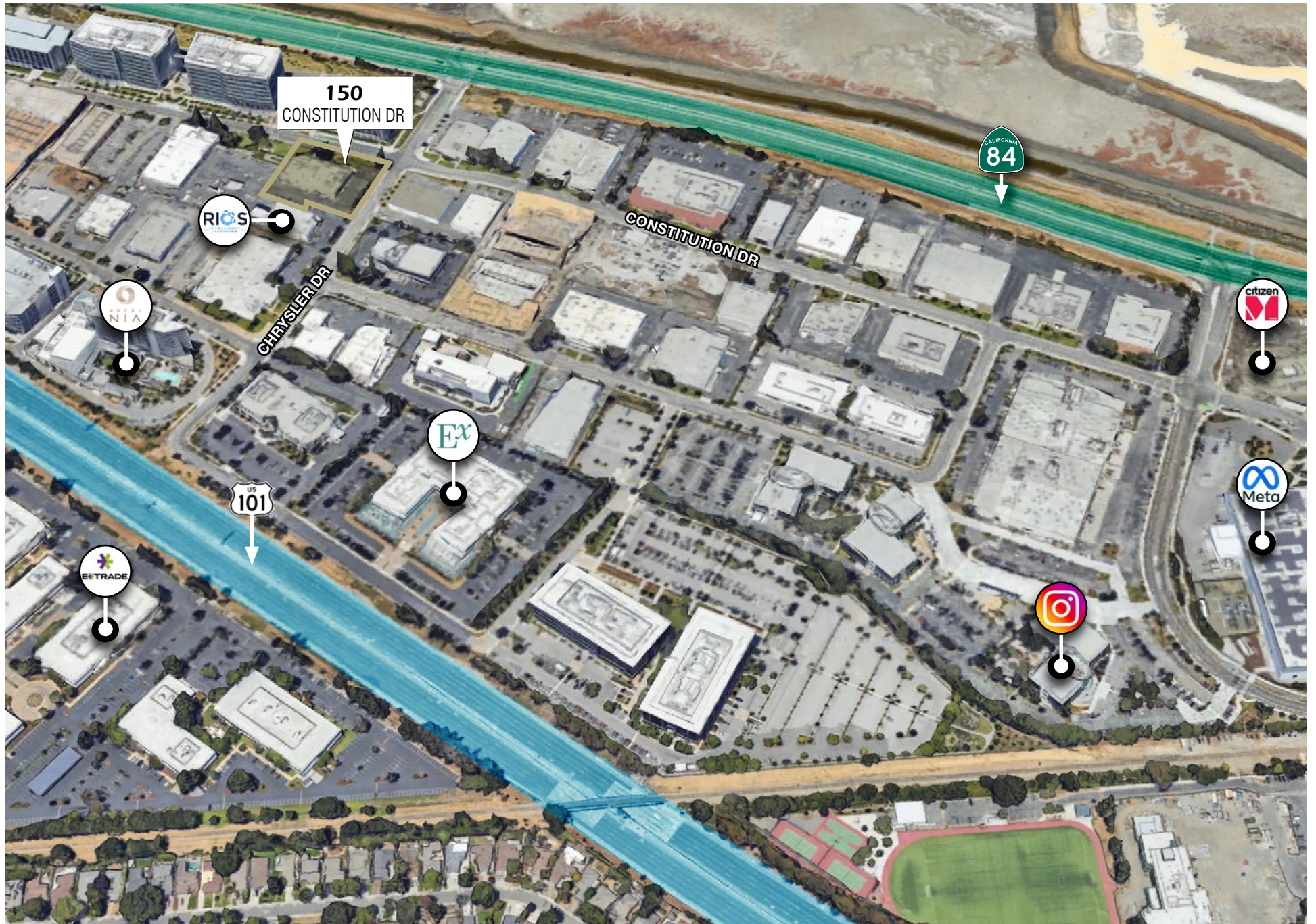
650.302.4775

CAL DRE LIC NO. 01872831



FOR LEASE → ±27,868 SF HIGH VISIBILITY WAREHOUSE BUILDING

150 Constitution Drive, Menlo Park



LOCATION OVERVIEW