



741 Barron Avenue

Redwood City, California



PROPERTY OVERVIEW

WAREHOUSE / SHOWROOM /
OFFICE FOR LEASE

HIGHLIGHTS

- ±10,000 SF Building
- 60/40 Warehouse, Showroom & Office
- 24' 4" Clear Height (at highest point)
- 20' 2" Clear Height (at walls)
- ±14,700 SF Yard / Parking
- Power: 200 A / 240 V / 3 Phase

ASKING RATE

- **\$2.35 PSF NNN**
- *NNN = \$0.10 PSF/Month*

ZONING

**M-1 / NFO: (UNINCORPORATED
SAN MATEO COUNTY)**

Allows for a wide range of industrial
and commercial uses

FOR LEASE → ±10,000 SF WAREHOUSE / SHOWROOM / OFFICE

741 Barron Avenue, Redwood City



CONTACT US

Frank Orrell
fo@seq-rs.com
650.302.4775
CAL DRE LIC NO. 01872831

Anthony Kamm
ak@seq-rs.com
650.888.3858
CAL DRE LIC NO. 01783456

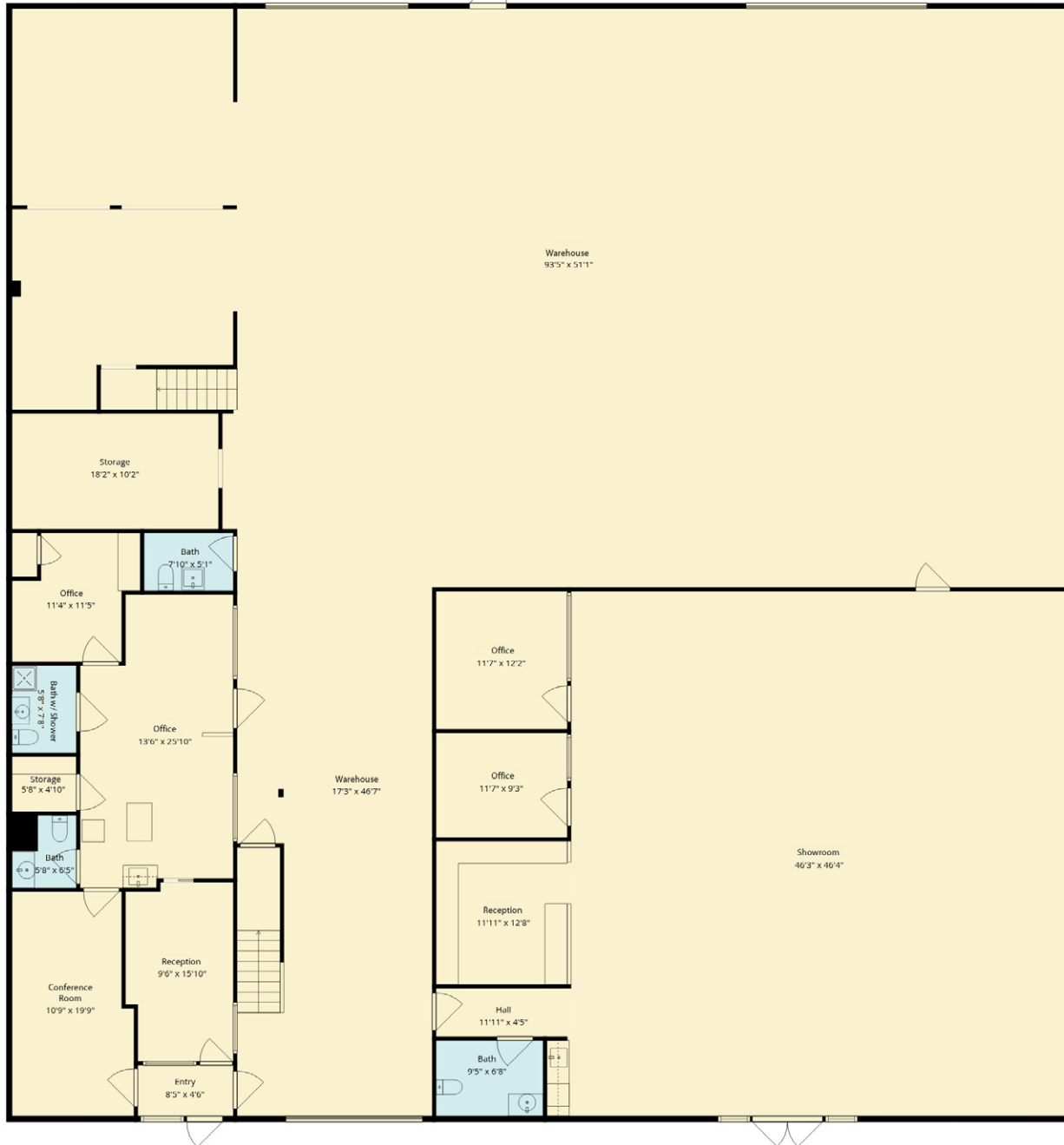
Ryan Pegnim
rcp@seq-rs.com
650.346.9820
CAL DRE LIC NO. 01478696

Zachary Pollock
zpollock@seq-rs.com
650.868.7411
CAL DRE LIC NO. 01958760



FOR LEASE → ±10,000 SF WAREHOUSE / SHOWROOM / OFFICE

741 Barron Avenue, Redwood City



CONTACT US

Frank Orrell
fo@seq-rs.com
650.302.4775
CAL DRE LIC NO. 01872831

Anthony Kamm
ak@seq-rs.com
650.888.3858
CAL DRE LIC NO. 01783456

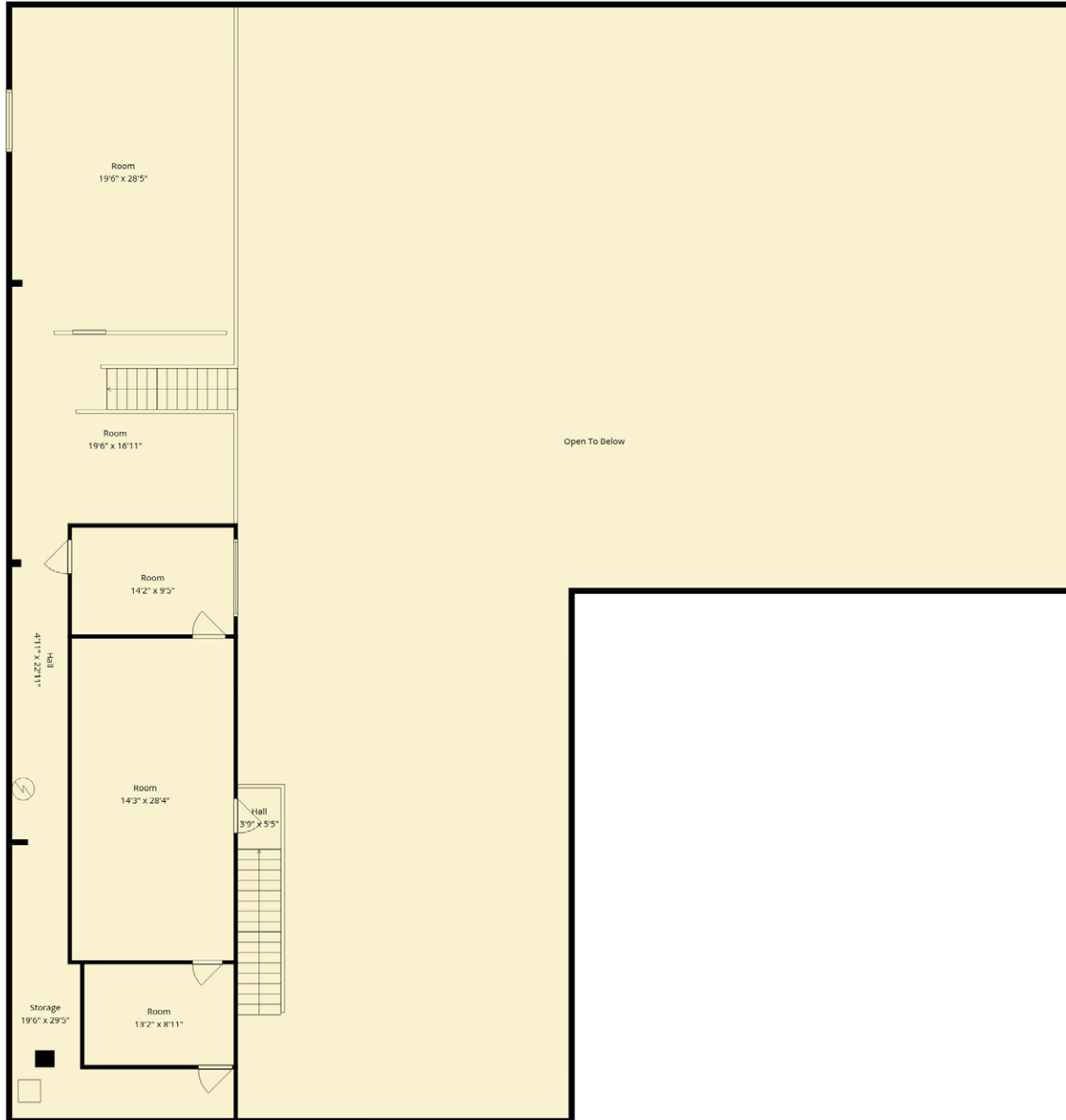
Ryan Pegnim
rcp@seq-rs.com
650.346.9820
CAL DRE LIC NO. 01478696

Zachary Pollock
zpollock@seq-rs.com
650.868.7411
CAL DRE LIC NO. 01958760



FOR LEASE → ±10,000 SF WAREHOUSE / SHOWROOM / OFFICE

741 Barron Avenue, Redwood City



CONTACT US

Frank Orrell
fo@seq-rs.com
650.302.4775
CAL DRE LIC NO. 01872831

Anthony Kamm
ak@seq-rs.com
650.888.3858
CAL DRE LIC NO. 01783456

Ryan Pegnim
rcp@seq-rs.com
650.346.9820
CAL DRE LIC NO. 01478696

Zachary Pollock
zpollock@seq-rs.com
650.868.7411
CAL DRE LIC NO. 01958760



FOR LEASE → ±10,000 SF WAREHOUSE / SHOWROOM / OFFICE

741 Barron Avenue, Redwood City

